

MEDITERRANEAN CRUISES

White Star Line

S. S. ADRIATIC

24,541 Tons

Length, 726 Feet

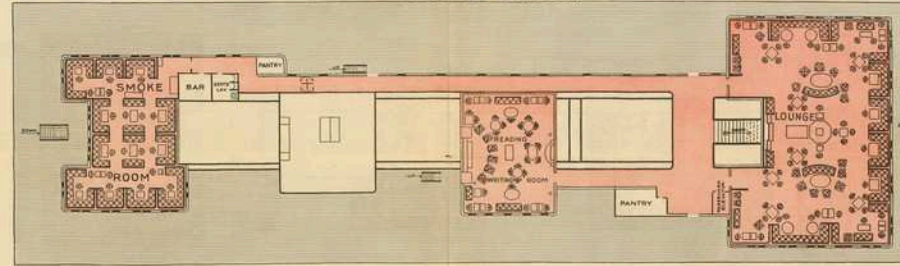
Breadth, 76 Feet

From New York January 7th, February 26th, 1925

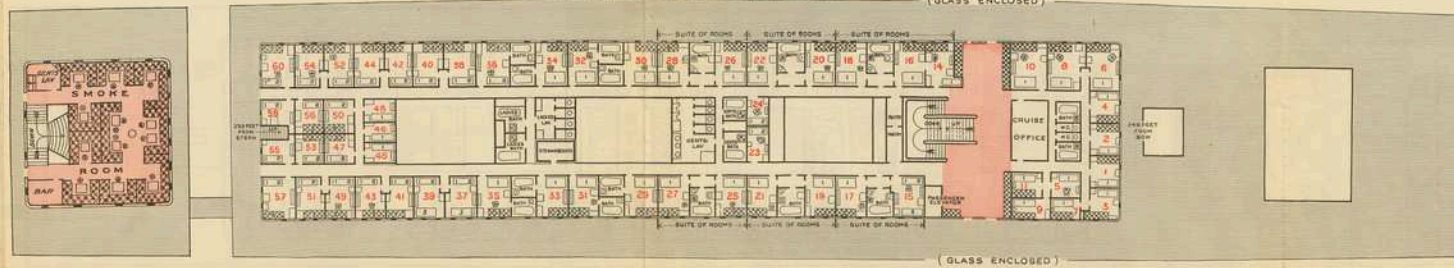


ODD NUMBERS ARE LOWER BERTHS
RED NUMBERS DESIGNATE THE ROOM

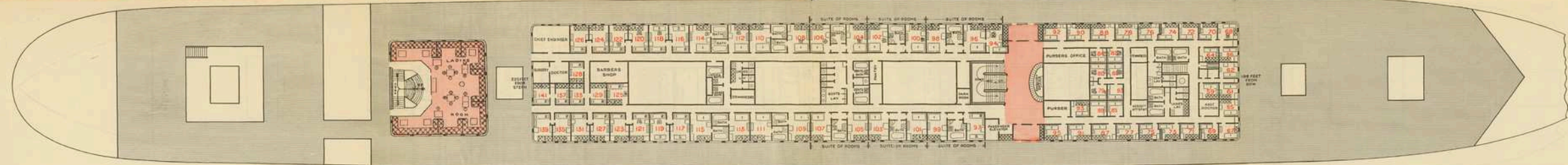
DECK A BOAT DECK



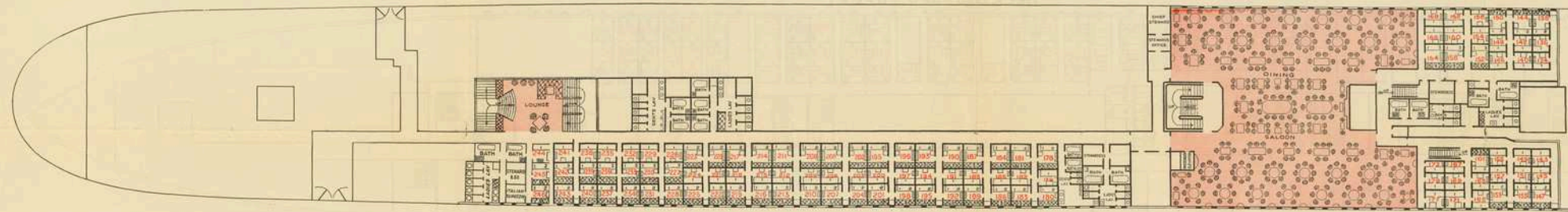
DECK B UPPER PROMENADE DECK



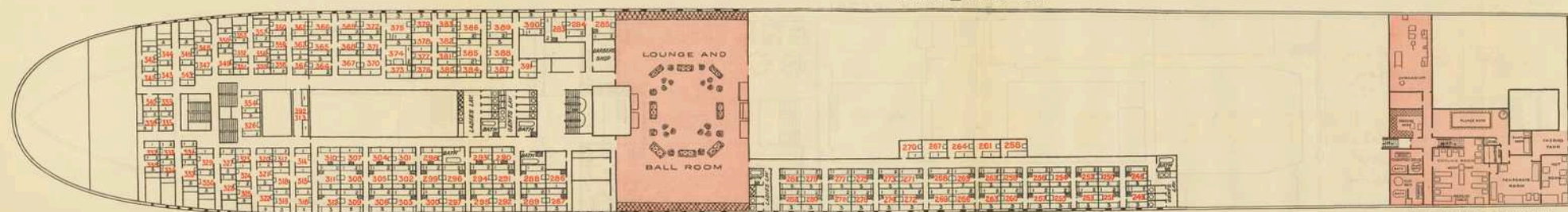
DECK C PROMENADE DECK



DECK D SALOON DECK



DECK E UPPER DECK



NOTES

- DECK B**
- Rooms 1, 2, 3, 4 are fitted with Bedstead (No. 1), 2 feet 6 inches wide, and Sofa Berth (No. 2).
- Rooms 5, 7, 9, 11, 13a, 13, 43, 46, 48 are fitted with Bedstead (No. 1), 2 feet 6 inches wide.
- Rooms 6, 8, 16, 17, 18, 19, 20, 21, 22, 23, 26, 27, 28, 29, 30, 31, 32, 33, 34, 35 are fitted with Bedstead (No. 1), 4 feet wide, and Sofa Berth (No. 3).
- Room 10 is fitted with Bedstead (No. 1), 4 feet wide, Pullman Upper Berth (No. 2), and Sofa Berth (No. 3).
- Room 14 is fitted with Bedstead (No. 1), 2 feet 6 inches wide, and Sofa Berth (No. 3). This room can be fitted as Sitting Room if desired.
- Rooms 36, 38, 40, 41, 42, 43, 44, 47, 49, 50, 51, 52, 53, 54, 56, 57, 60 are fitted with Bedstead (No. 1), 2 feet 6 inches wide, Pullman Upper Berth (No. 2), and Sofa Berth (No. 3).
- Rooms 23, 24, 55, 58 are fitted with Bedstead (No. 1), 2 feet 6 inches wide and Pullman Upper Berth (No. 2).
- DECK C**
- Rooms 99, 81, 62, 64, 65, 66, 67, 68, 69, 70, 71, 72, 73, 74, 75, 76, 77, 78, 79, 80, 81, 82, 83, 84, 85, 87, 88, 89, 90, 91, 92, 93, 94 are fitted with Bedstead (No. 1), 2 feet 6 inches wide.
- Rooms 96, 98, 99, 100, 101, 102, 103, 104, 105, 106, 107, 108, 109, 110, 111, 112, 113, 114, 115 are fitted with Bedstead (No. 1), 4 feet wide, and Sofa Berth (No. 3).
- Room 94 is fitted with Bedstead (No. 1), 2 feet 6 inches wide, and Sofa Berth (No. 3). This room can be fitted as Sitting Room if desired.
- Rooms 97, 116, 117, 118, 119 are fitted with Two Bedsteads (Nos. 1 and 3), and Pullman Upper Berth (No. 2).
- Rooms 120, 121, 122, 123, 124, 125, 126, 127, 128, 129, 131, 132, 133, 137, 139, 141 are fitted with Bedstead (No. 1), Pullman Upper Berth (No. 2), and Sofa Berth (No. 3).

The Best Way To Carry Your Travel Funds!

BUY I. M. M. TRAVELERS CHECKS

AMERICAN LINE RED STAR LINE WHITE STAR LINE
ATLANTIC TRANSPORT LEYLAND LINE WHITE STAR-DOMINION LINE

MAY 25 1924

INTERNATIONAL MERCHANT MARINE COMPANY

PAY TO THE ORDER OF

INTERNATIONAL MERCHANT MARINE COMPANY

TWENTY DOLLARS

NO D00000

INTERNATIONAL MERCHANT MARINE COMPANY

INTERNATIONAL MERCHANT MARINE COMPANY

INTERNATIONAL MERCHANT MARINE COMPANY

SAFE - WIDELY AVAILABLE - CONVENIENT

ISSUED IN DENOMINATIONS OF \$10, \$20, \$50 AND \$100 - COST 1/2% OF \$1

Mediterranean Cruises

WHITE STAR LINE
S.S. ADRIATIC
RED STAR LINE
S.S. LAMPLAND

PLANS OF PASSENGER ACCOMMODATIONS

Mediterranean Cruises

WHITE STAR LINE
S.S. ADRIATIC
RED STAR LINE
S.S. LAMPLAND

PLANS OF PASSENGER ACCOMMODATIONS

MEDITERRANEAN CRUISES

Red Star Line

S. S. LAPLAND

18,595 Tons

Length, 620 Feet

Breadth, 70 Feet

From New York January 17th, March 8th, 1925



ODD NUMBERS ARE UPPER BERTHS
RED NUMBERS DESIGNATE THE ROOM

