

# LANDS AND ISLANDS THAT ARE STRANGER TO THE TOURIST



FIFTH WORLD CRUISE  
OF THE  
RED STAR LINE  
S.S. BELGENLAND

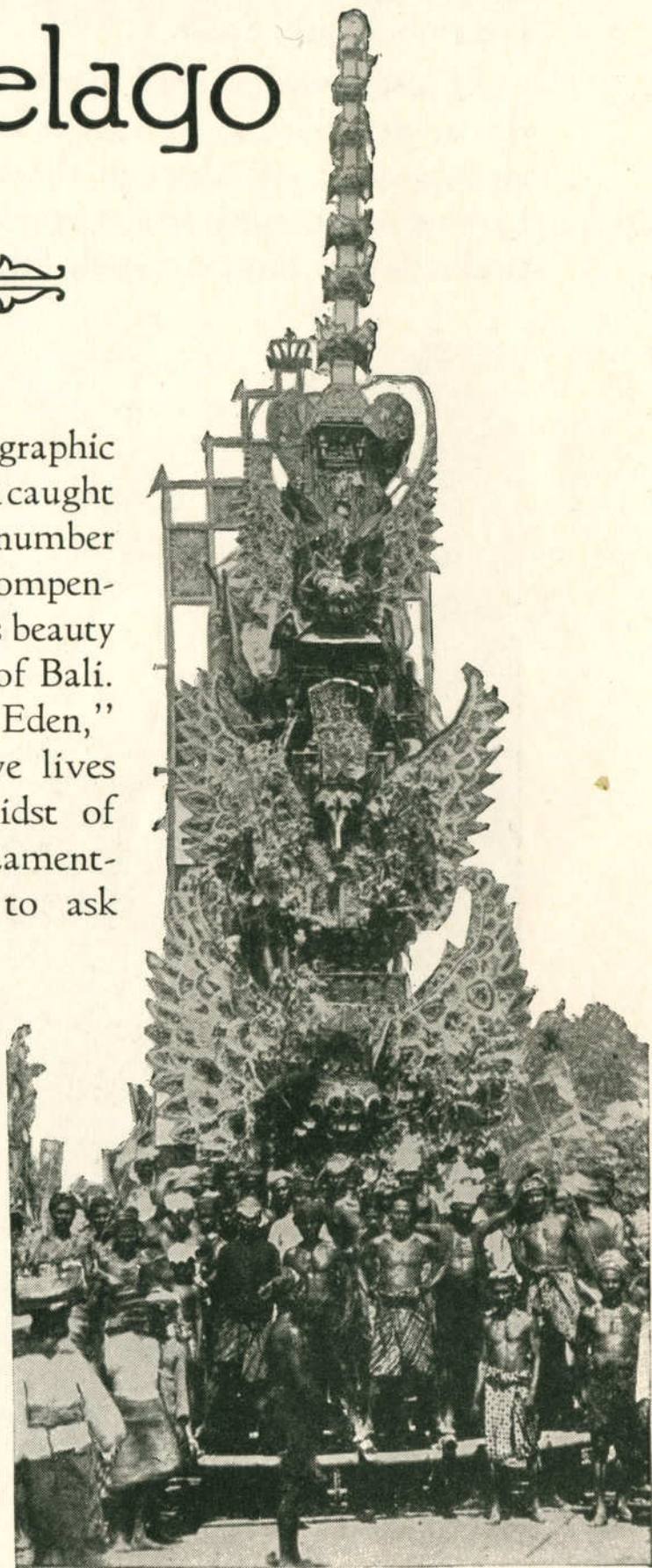


# Bali and the East Indian Archipelago



**R**EADERS of the National Geographic Magazine found their attention caught by an article in the March number which was notable even in that Compendium of the Unusual among earth's beauty spots. It had to do with the island of Bali. The author calls it a "Garden of Eden," where peaceful and happy folk live lives of primitive simplicity in the midst of tropical luxuriance and loveliness. Lamenting that tourists are beginning to ask "Where is this trick island of Bali?" and that "modernism is bound soon to sweep this primitive isle", he adds: "A well-known tourist agency considers routing its around-the-world cruise via Bali".

We plead guilty. Believing that the author will forgive us and that prospective cruisers will call us blessed, the Red Star Line and the American Express Company take pride in announcing that for the first time, members of a world cruise are now



Copyright—Underwood & Underwood  
FUNERAL CAR—BALI

offered the opportunity of visiting Bali in connection with the Fifth World Cruise on the S. S. "Belgenland", sailing from New York, December 17th, 1928.

At first it was planned to take the great "Belgenland" herself over this route which is to include Bali not only, but a comprehensive twelve-day cruise through the East Indian Archipelago. Shallow harbors and narrow straits between island gems make this impracticable for so large a vessel, but furnish ideal cruising grounds, on

smooth seas, for a smaller ship. The ship has been found in the "Op Ten Noort" of the K. P. M. Line, a new steamer finished last year, and equipped with all modern conveniences, especially for this service. All rooms are outside rooms. The "Op Ten Noort" has been chartered to leave Manila on February 19th and to connect with the "Belgenland" itinerary again at Batavia on March 3rd. The following pages give an outline of the journey through oriental Gardens of Eden that may be had in the meantime.



*Copyright—Underwood & Underwood*  
 PRIESTESS RECEIVING FLORAL OFFERING—BALI

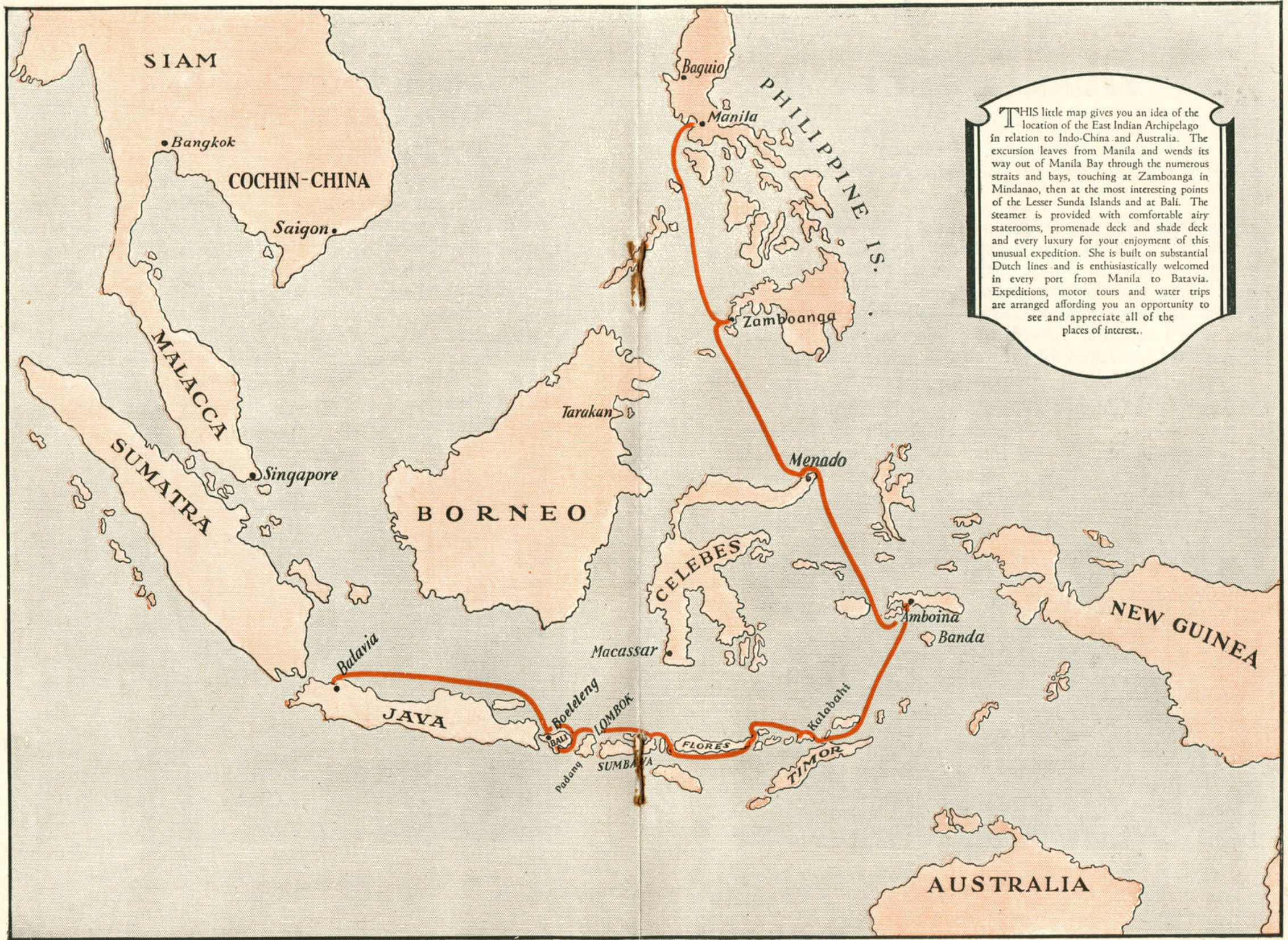
## THE EAST INDIAN ARCHIPELAGO

The East Indian Archipelago, though little known to the tourist, is rich in romance and fantastic beauty. Your steamer wends its way through straits and bays, visiting islands inhabited by strange peoples with stranger customs. Beautiful tropical vegetation, exquisite perfume-laden flowers, white sandy beaches, blue waters and heavenly skies will hold you spellbound from start to finish. Birds of gay and colorful plumage, brown-skinned natives, draped in real batiks, bedecked with endless strings of vari-colored beads, lend an atmosphere of unreality. Volcano peaks smouldering on the horizon, gorgeous sunrises and sunsets, new worlds are opened to you at every port. From Manila, your port of embarkation, to Batavia where you return to the "Belgenland", each day is like a chapter out of the fairy tales of your childhood.



*Copyright—Underwood & Underwood*

WEDDING PROCESSION—BALI



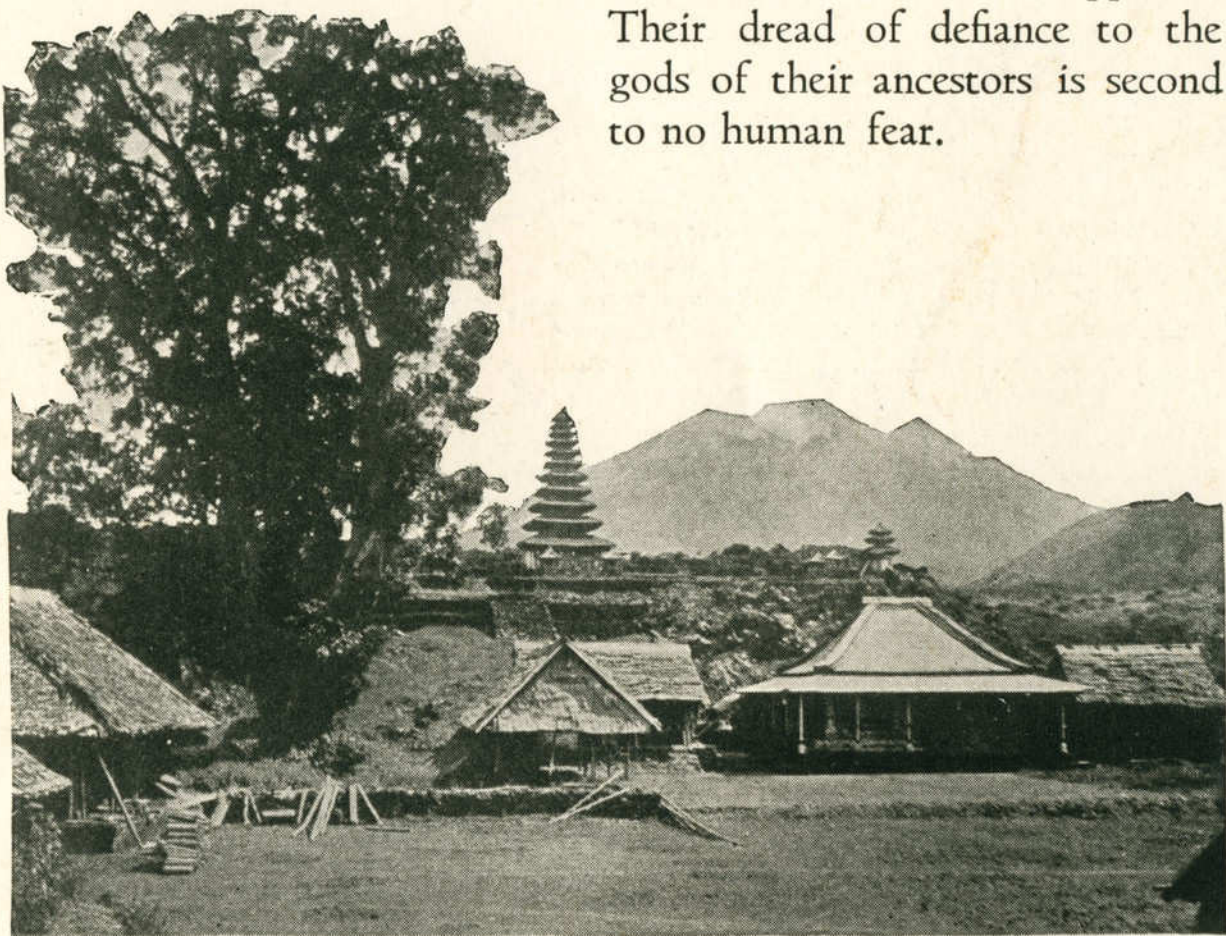
THIS little map gives you an idea of the location of the East Indian Archipelago in relation to Indo-China and Australia. The excursion leaves from Manila and wends its way out of Manila Bay through the numerous straits and bays, touching at Zamboanga in Mindanao, then at the most interesting points of the Lesser Sunda Islands and at Bali. The steamer is provided with comfortable airy staterooms, promenade deck and shade deck and every luxury for your enjoyment of this unusual expedition. She is built on substantial Dutch lines and is enthusiastically welcomed in every port from Manila to Batavia. Expeditions, motor tours and water trips are arranged affording you an opportunity to see and appreciate all of the places of interest.

## STRANGE GODS

A land of strange gods indeed! The pagan urns of Menado bring mental pictures of the burning of the dead of long ago and the ceremonies of the burial of the ashes in elaborate urns fashioned by hand for the purpose.

The elaborate ceremonies of worship in the Temples of Bali lasting for hours into the night are of the greatest interest to watch. They are truly beautiful, performed to the music of the native instruments. The Balinese for these occasions are clad in brilliant colors, bedecked with gayly colored beads and tinkling bangles of shining brass, with bracelets of colored stones and flowers as they sway backward and forward to the weird rhythm of the music.

The natives of these islands are as little children in their abject reverence for and faith in their gods and appeal to them for rain or sunshine, health or happiness. Their dread of defiance to the gods of their ancestors is second to no human fear.



A VILLAGE—BALI

*Copyright—Underwood & Underwood*

## STRANGE ARCHITECTURE

Almost every form of architecture found in the tropics is to be found in these islands. The elaborate details of some of the temples bring memories of Chinese pagodas with their quaint pointed roofs. In other sections the straight, narrow streets are lined with simple thatched houses built on the ground with no attempt at flooring except for mattings woven from palmetto leaves and other tropical reeds. Practically all of the native houses are only one story high and built very close together.

Many of the temples and mosques are made of stone and show the labor of hundreds of hands over a period of many years.

In some of the larger islands the influence of the Arabs is seen very strongly in the elaborate turreted temples dotted here and there with colored stones and painted with brilliant colors in conventional Arabic designs.



MARKET SCENE—BALI

*Copyright—Publishers Photo Service*



# ITINERARY OF THE CRUISE

---

*Tuesday, February 19th:* Sail from Manila on the S. S. "Op Ten Noort" out into the gorgeous sunset past Corregidor Island.

*Wednesday, February 20th:* En route to Zamboanga, always in sight of land. Frequently cruise members have wonderful views of tropical forests.

*Thursday, February 21st:* Reach Zamboanga in the morning. Zamboanga, on the Island of Mindanao, is one of the most interesting places in our Far Eastern Island Empire. It is the capital of Moro Province and is the scenic objective of the residents of Manila when bent on a holiday. The program includes an automobile excursion to Taluk-Sanguay, an interesting Moro village about fifteen miles distant as well as an inspection of the interesting markets and native portion of Zamboanga itself.

*Friday, February 22nd:* En route across the Celebes Sea.

*Saturday, February 23rd:* Arrive at Menado in the morning. All day trip by automobile through the wonderland of Minahasa along the ascending Empoeng route to the Minahasa mountain range, passing the volcanic mudwells near Kakas, thence on to Tondano Lake. The route lies through virgin territory as yet unspoiled by modernism, abounding in beautiful waterfalls and lakes, the very names of which are unknown to the outside world, past strange and interesting villages where primitive habits of life must soon, no doubt, give way to civilization.

*Sunday, February 24th:* En route past many other lovely tropical islands.

*Monday, February 25th:* Amboina. Land in the cool morning and explore the settlement. Amboina is noted as the island of cloves though in recent years both coffee and cocoanut are gradually supplanting spices. One of the treats of this stop will be a visit to the beautiful Rumphius' Sea Gardens with their incomparable spectacle of submarine growth seen through the crystal-clear water. Here also is the famous Benteng, the historical stronghold which was the first pillar of Holland's authority in 1605. There are also some beautiful stalactite grottoes.

*Tuesday, February 26th to Thursday, February 28th:* At sea, weaving in and out among the Lesser Sundas with a short stop on Kalabahi where interesting native dances will be arranged. The trip through these islands is a veritable feast for the nature lover. As you sail through narrow straits from bay to harbor you pass on all sides beautiful sandy beaches in the foreground and islands rich in tropical vegetation and exotic flowers in the background. Hence the old Portuguese name "Flores" given to one of the larger of these small islands.

*Friday, March 1st:* Arrive Bali. Disembark in the morning at Padangbay. An enthusiast writes "Bali is superb. Java and Ceylon must become back numbers for natural beauty when Bali enters the contest. Here people are still living in the middle ages and as yet are blissfully unconscious of the fact". Look again at the National Geographic with its superb pictures. The program includes a drive across the island which affords an opportunity to see unrivalled scenic panoramas, Buddhist temples, monumental rock-hewn royal tombs, and, most interesting of all, the natives themselves as they go with dignity about their daily tasks unconscious of our presence, or engage in their frequent religious devotions, or gather to enjoy a native dance. We embark in the evening at Boeleng.

*Saturday, March 2nd:* En route along the North Shore of Java.

*Sunday, March 3rd:* Batavia. The "Op Ten Noort" is due to arrive at Tandjong Priok, the harbor of Batavia, the morning of March third. Passengers from the "Belgenland" World Cruise will transfer immediately to the "Belgenland", and will then be provided with an excursion to Batavia and Weltevreden. They will sail with the "Belgenland" for Singapore in the evening.

# CONDITIONS

---

The optional cruise-tour over the East Indian Archipelago is offered to "Belgenland" World Cruise passengers under the same general conditions as are all optional tours.

The S. S. "Op Ten Noort" sails under the command and control of the Koninklijke Paketvaart Maatschappij (Royal Packet Navigation Company) and cruise members taking this cruise-tour are subject to the rules and regulations of that Company.

In case of this cruise-tour, as always, the Management must reserve the right to cancel the cruise-tour if bookings are not sufficient to warrant its operation.

Only about 150 persons can be accommodated on the S. S. "Op Ten Noort".

Reservations will be accepted in the order of application for any cruise passenger already booked for the "Belgenland" World Cruise, provided such applications are accompanied by a deposit of 25% of the price of the cruise-tour. Applicants should consult the deckplan of the "Op Ten Noort" and the tariff, as given below, and request reservation of specific stateroom or berth. This or the nearest available equivalent will be offered them.

Final payment for membership in the cruise-tour must be made at the time of making final payment for the "Belgenland" World Cruise.

The tariff is as follows, including shore excursions as advertised:

<i>Shade Deck:</i>	<i>Rate per Person</i>
<i>Double rooms:</i>	
Berths 99-110 and 171-182..... 8 Rooms	\$375.00
Berths 85-96 and 157-168..... 8 Rooms	400.00
Berths 45/6, 48/9, 51/4, 56/61, 63/8, } 70/83, 117/8, 120/1, 123/6, 128/33, } 34 Rooms	425.00
135/40, 142/55	
Berths 41/4 and 113/6..... 4 Rooms	435.00
<i>Single rooms:</i>	
97/8 and 169/70..... 2 Rooms	415.00
39, 40, 47, 50, 55, 62, 69, 84, 111, 112, } 119, 122, 127, 134, 141, 156 } 16 Rooms	450.00
<i>Promenade Deck:</i>	
<i>Double rooms:</i>	
35/6 and 37/8..... 2 Rooms	375.00
<i>Boat Deck:</i>	
<i>Double rooms:</i>	
1/4, 6/9, 11/14, 16/21, 23/6, 28/31, } 33/4 } 14 Rooms	475.00
<i>Single rooms:</i>	
5, 10, 15, 22, 27, 32..... 6 Rooms	495.00
De luxe rooms with private bath..... 2 Rooms	1,100.00

*Baggage:* Passengers are advised to take only such baggage as may be conveniently kept in their staterooms. A baggage-room is, however, available if required.

*Laundry:* The steamer is fitted with a laundry to serve passengers.

*Cancellation:* No refund can be made to passengers cancelling their membership in the cruise-tour after December 17th, unless the space is resold.

